

Getting Started with ...



www.educationalimpact.com

Welcome to Educational Impact's Online Learning Academy! Before you log on to EI's site, take a minute to review the Getting Started information below. When you are ready, you can access EI's online programs via the Internet at www.educationalimpact.com.

- **Continuing education & graduate credits available**
- **Listen to the nation's leading experts in education**
- **Observe classroom demonstrations**
- **Self-paced to suit your busy lifestyle**
- **Professional development delivered by video**

STEP ONE: Logging In



The "Click here to LOG-IN" button is located in the top right corner of EI's homepage. Enter your ...

User Name/ID #:

Password:

STEP TWO: Getting Your Computer Ready

To view all of video in EI's programs, you may need to install "QuickTime" on the computers you



intend to work from, both at home and at school. Many computers already have QuickTime installed, but if yours does not, this software

can be easily installed from the EI login page

1. Click on "Software Check" to determine if you already have QuickTime.
2. If QuickTime is not on your computer, you will be prompted to download it.
3. Click on "Installing QuickTime." (If you are still experiencing difficulty you may have to contact your network person or IT coordinator to help you.)

STEP THREE: Taking Virtual Tour of EI's Program Features

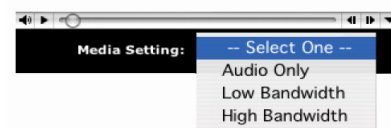
We recommend you view the 11-minute "EI Tour" to make sure you are taking advantage of all the program features EI offers.



Click on the "Getting Started" icon on the log in page. If you do not want to view the entire tutorial, use the tutorial menu to select the specific feature you want to learn more about.

STEP FOUR: Selecting Media Settings

Log in and select the program and module you wish to view. Select the correct media setting to view the video component. Low for dial-up and high for high bandwidth connections.



If you experience delays in video playback, switch from the "High Bandwidth" to the "Low Bandwidth" or "Audio Only". Do not click on "Play"; the movie will begin on its own when all content has been downloaded.

Help from EI

The EI web site is designed for users of all abilities. If you experience any technical difficulties, we are here to help you. Call 888-207-9856 or click on the "Live Tech Support" button on the EI site.



Be sure to use EI's new "Search" feature located on the top menu bar.

Enter key words to locate the specific content from EI's Online Academy.